

Replacement Parts and Accessories

Item Number	Product	Description
XSW1218-SC	Saf-T-Wrap™ Station Suction Cup Kit	(4) suction cups and (4) screws/washers
XSW1218-RC	Saf-T-Wrap™ Station Rotation Label Cover	Cover for label compartment
XSW1218-CS	Saf-T-Wrap™ Station Storage Cover Set	Left and right side covers
XSW1218-SR	Saf-T-Wrap™ Station Support Rod	Support rod assembled with (2) end plugs
XSW1218-RD	Saf-T-Wrap™ Station Rotation Label Dividers Kit	(7) dividers
XSW1218-RA	Saf-T-Wrap™ Station Roll Width Adaptors Kit	(2) roll width adapters
XSW1218-SLIDE	Saf-T-Wrap™ Station Replacement Slide Cutter	(2) replacement cutters
XSW1218-RB	Saf-T-Wrap™ Station Replacement Cutting Blades	(2) replacement blades
XSW1218-HB	Saf-T-Wrap™ Station Wall Mounting Bracket Kit	(2) wall hanging brackets (fasteners not included)



Cautions for Safety and Best Results



- Although blade is designed to help prevent injuries, parts may be sharp and should be handled with caution.
- Do not load film or foil while hanging on shelf or on wall – always load on secure flat surface with suction cups engaged. Ensure that shelving units are secure before placing the weight of the Saf-T-Wrap™ Station in place or using.
- When using on wire shelving, ensure full engagement of hooks to prevent injury and keep an unobstructed path to prevent accidentally being knocked off of shelf.
- To prevent tipping – ensure suction cups are engaged.
- Do not place dispenser under heat lamp or next to stove or on hot surface.
- When transporting, ensure all latches and covers are fully latched in the closed position before carrying, especially in a vertical orientation.
- When loading film or foil, use caution when opening – the unit cover with dating label storage may be heavy – use caution and set cover down gently on table when replacing film or foil rolls.
- In the event of film, foil or dating label jamming, ensure unit is on flat, secure surface and open unit to adjust; don't force it to prevent injury.
- Use extreme care when replacing blades and cutters to avoid injury.

Saf-T-Wrap™ Station

Portable Wrapping Station with Integrated Dating Label Dispenser



Main Photo - SW1218SC Slide Cutter
Inset Photo - SW1218 - Safety Blade

San Jamar
Chef Revival
555 Koopman Lane
Elkhorn, Wisconsin 53121
USA
T: +1.262.723.6133
F: +1.262.723.4204
world@sjcr.com

SJCR Canada
3300 Bloor Street West
Center Tower, 11th Floor,
Suite 3140
Toronto, ON M8X 2X3
CANADA
T: +1.416.760.7367
F: +1.416.207.2071
canada@sjcr.com

SJCR Europe
Schoorstraat 26A
Bus-1 B-2220 Heist op-den Berg
BELGIUM
T: +32 1522 8140
F: +32 1522 8148
emea@sjcr.com

SJCR México
Av. Universidad # 1377-701
Colonia Axotla CP 01030
Del. Álvaro Obregón
MÉXICO, DF
T: +52 (55) 3626 0772
F: +52 (55) 5273 4495
mexico@sjcr.com

SAN JAMAR
Smart ♦ Safe ♦ Sanitary

101743RevA



SAN JAMAR
Smart ♦ Safe ♦ Sanitary

Saf-T-Wrap™ Station Instructions

Thank you for purchasing San Jamar's Saf-T-Wrap™ Station, a portable wrapping station with integrated dating label dispenser. Please take a moment to review the key features and instructions for use.

Capacity: Foil/Film: width- 12" up to 18 1/2", length- standard 2,000' foodservice rolls or up to 5.1" diameter
 Dating Labels: 3 1/4" max. diameter, 2 1/4" max roll width

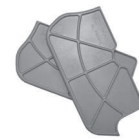
CONTENTS



(1) Saf-T-Wrap™ Station



SW1218- (4) total Blades, (1) installed, or SW1218SC (1) Slide Cutter, installed



(2) Roll Width Adaptors SW1218-RA



(7) Rotation Label Roll Dividers SW1218-RD



(1) Support Rod SW1218-SR



(2) Wall Mounting Brackets SW1218-HB

Getting Started:

- Please clean and sanitize your Saf-T-Wrap™ Station before first use.
- Read entire Instructions including **Cautions for Safety and Best Results**.
- Please ensure all users of this product are properly trained on instructions for use; retain this instruction sheet for future reference and training.

Versatile Options for Use

• Countertop, Table Top

For maximum stability, ensure suction cups are securely engaged on the surface before use.

• Hanging on Wire Shelving

The integrated hook feature in the back of the unit allows secure hanging and use on standard wire shelves. Simply hang the unit on the shelf ensuring hooks engage tightly with the shelf.



Saf-T-Wrap™ Station on wire shelving



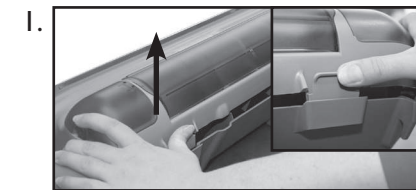
Saf-T-Wrap™ Station mounted on wall using brackets

- **Wall Mounting** fasteners are not included with the Wall Brackets. Make sure to select fasteners and wall anchors suitable for the wall type you will be mounting to, and are capable of supporting a weight of at least 20 lbs per bracket.

Cleaning

- Saf-T-Wrap™ Station is dishwasher safe and should be cleaned before first use, then as needed to ensure sanitary use.
- Before washing, ensure all tools, dating labels and film/foil rolls are removed.
- Your unit has drain holes on the bottom to ensure complete draining of wash, rinse and sanitize water.
- Always ensure unit is completely dry before loading rolls and tools as well as general use.

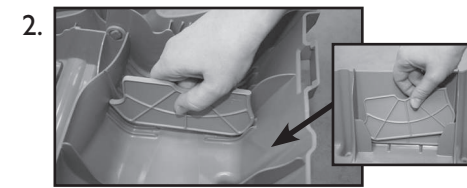
Instructions For Use



1.

1. Opening Saf-T-Wrap™ Station:

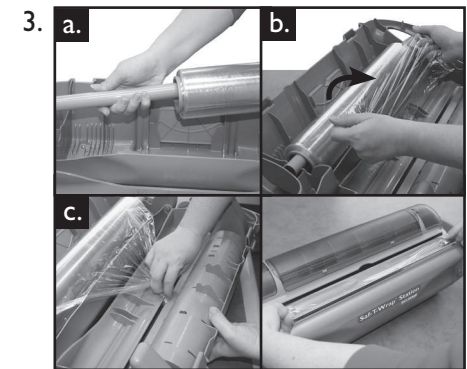
- Apply inward pressure to latches and lift upward to release.



2.

2. Adjusting roll adaptors for size of roll

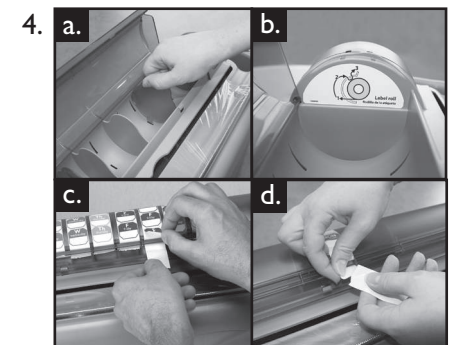
- Insert adaptors in appropriate slot in base to center roll.
 (Note: Adaptors can only be installed into slots in one direction allowing the adaptor to fully insert into the slot, otherwise the roll extends too high. Make sure ends of tubes are seated in the cradle.)
- **Note:** if 18" roll is used, no adaptors are necessary – store adaptors in rear center pocket when not being used.



3.

3. Loading and Dispensing film or foil

- Insert tube through foil or film, seat roll and tube into unit allowing the film or foil to unroll from the top (as shown) – make sure roll turns freely.
 - Unroll approx 12" of film/foil for easiest feeding through dispensing slot, gather ends together in center to feed through center "Easy Feed" slot.
 - Close and latch unit. Pull out a few inches of film/foil to stage on blade (SW1218) or slide cutter (SW1218SC) for first use.
- * **Do not load film or foil** while unit is hanging on shelf or mounted on wall.



4.

4. Loading and Dispensing dating rotation labels

- Open dating label cover.
- Determine size and number of rolls to load (Note: dividers allow range of widths from 3/4" up to 2 1/4" and capacity up to (11) 1" rolls.)
 - Position dividers to hold preferred roll configuration securely in place.
 - Referring to the diagram on ends of interior of dating label area, position rolls to dispense as shown – feed strips of labels through slotted cover as shown in diagram.
- Close and snap cover shut
 - To dispense: pull end of strip to self peel labels as shown
 - Manually tear remaining strip backing as needed to not impede foil/film dispensing.



5.

5. Loading and Using Tool Storage:

- Push side tabs to open cover; press down securely to latch.

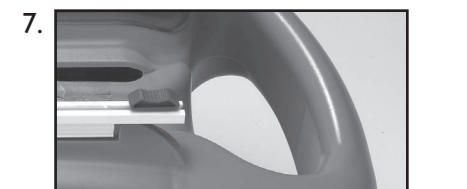


6.

6. Replacing Blade/Slide Cutter

Over time, the blade or slide cutter on your Saf-T-Wrap™ Station will become dull or soiled and need replacing. **Carefully** lift the blade/cutter off of the Saf-T-Wrap™ Station and discard. To install a new blade/cutter, line up the underside of the blade/cutter with the blade/slide cutter rail between the two tabs and push securely into place.

The blade and slide cutters are interchangeable, providing maximum flexibility.



7.

7. Transporting

Make sure all storage and dating label doors are closed before transporting. Dual handles make it possible to transport using one hand.