

SOMERSET



SDP-747 & SDP-747D OPERATIONS MANUAL



SOMERSET INDUSTRIES

1 ESQUIRE RD. • N. BILLERICA, MA 01862 • USA • 978-667-3355 • somerset@smrset.com

UNCRATING AND INSTALLATION

After the outside straps are cut and the box is removed, cut the straps that hold the unit on the wooden base.

Remove the unit from the base and secure it on top of a solid surface (table or stand).

CAUTION:

- Verify table stability and make sure the dough press is not sliding.

Wipe off any dust collected during shipping.

Verify the height for the unit is ergonomically suitable for the user(s).

Connect the plug to a power outlet (that meets local electrical codes) as specified by the power label (rear of unit).

SET UP

Dough thickness is a function of temperature and pressure.

The higher the temperature and time of pressure, the thinner the dough

Temperature Adjustments

SDP-747

Has a preset temperature setting at 150 degrees F (66 degrees C)

SDP-747D

Has a preset temperature setting at 250 degrees F (121 degrees C)

You can change the temperature setting (higher or lower) depending upon your dough and the speed of your operation (the higher the temperature, the faster the operation).

Actual platen temperature is displayed on the left side of the temperature controller. Set up temperature is displayed on the right side of the temperature controller.

To change the temperature on the controller, press and hold the blank button (*) on the left of the controller and simultaneously press the (^) or (v) keys to increase or decrease the controller to the desired temperature.

Please contact the factory if you need assistance setting the controller.

DOUGH PRESS SERIES SDP-747D die replacing procedure

Swing the bottom platen away from the top platen.

Align the slot on the bottom platen with the mould's and turn the mould 1/4 of a turn.

Remove the mold from bottom platen by turning it 1/4 of a turn..

- **CAUTION: AVOID TOUCHING HOT PLATEN(S).**

DOUGH PREPERATION

Dough must be round and its weight should reflect the diameter and thickness required.

Dough should be room temperature (between 60 TO 70 degrees F (15.6 TO 22 degrees C) for best results.

SDP-747 OPERATION

Verify that the displayed temperature is the same as the set up temperature.

Swing the bottom platen away from the top.

Spray the bottom and top platen surfaces with cooking oil.

Place the dough ball at the center of the bottom platen and spray the dough ball with the oil.

Swing the bottom platen under the top, lower the arm and hold it for 1 to 5 seconds or until the dough is spread.

Lift the arm and swing the bottom platen away from the top.

Remove the dough from the bottom platen and repeat the same process for the next piece of dough.

SDP-747D OPERATION

Verify that the displayed temperature is the same as the set up temperature.

Swing the bottom platen (with the mold attached on it) away from the top platen.

Spray the mold and the top platen plate with cooking oil.

Place the dough ball at the center of the mold and spray the dough ball with the oil.

Swing the bottom platen under the top, lower the arm and hold it for 1 to 5 seconds or until the dough is spread.

Lift the arm and swing the bottom platen away from the top.

Hold/cut the slotted section on the mold with a plastic spatula.

Remove the dough from the bottom platen and repeat the same process for the next piece of dough.

CLEANING

Turn unit OFF, and remove power cord from power outlet.

Let unit cool down to room temperature.

With a clean rag, wipe off platens, handle and other surfaces.

Do not use scouring pads or sharp objects to clean the platen surfaces.

Clean the Stainless Steel surfaces with a S.S. cleaner.

Do not submerge unit in water or other liquids for cleaning; do not use inflammable spirits for cleaning this unit.

Plug the power cord into the power outlet after cleaning, the unit is ready for use.

CAUTION: Do not place metallic objects or screen between the platens.

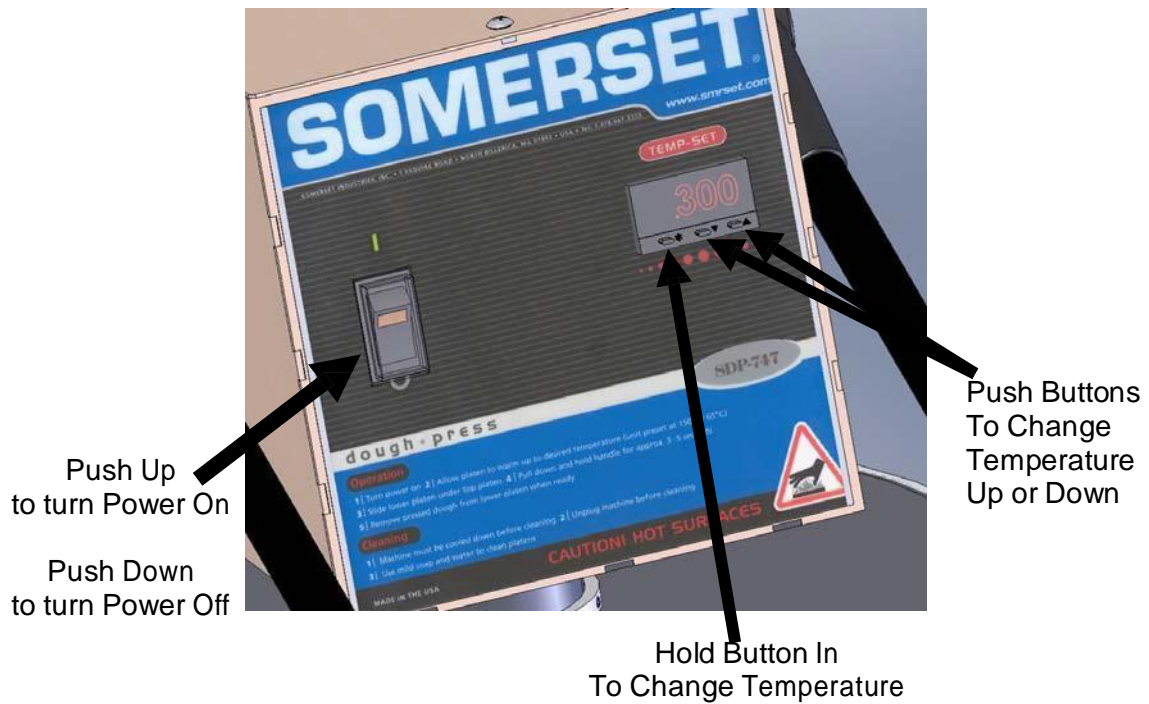
NOTE: This unit is maintenance free, do not apply any oil or grease on any parts.

CAUTION: To remove the cylinder or work on the power assists mechanism (P.A.M.), you must reduce the tension of the P.A.M. mechanism by turning the tension bolt Counter-Clock Wise until there is no tension on the P.A.M.

Contact the factory for this operation.

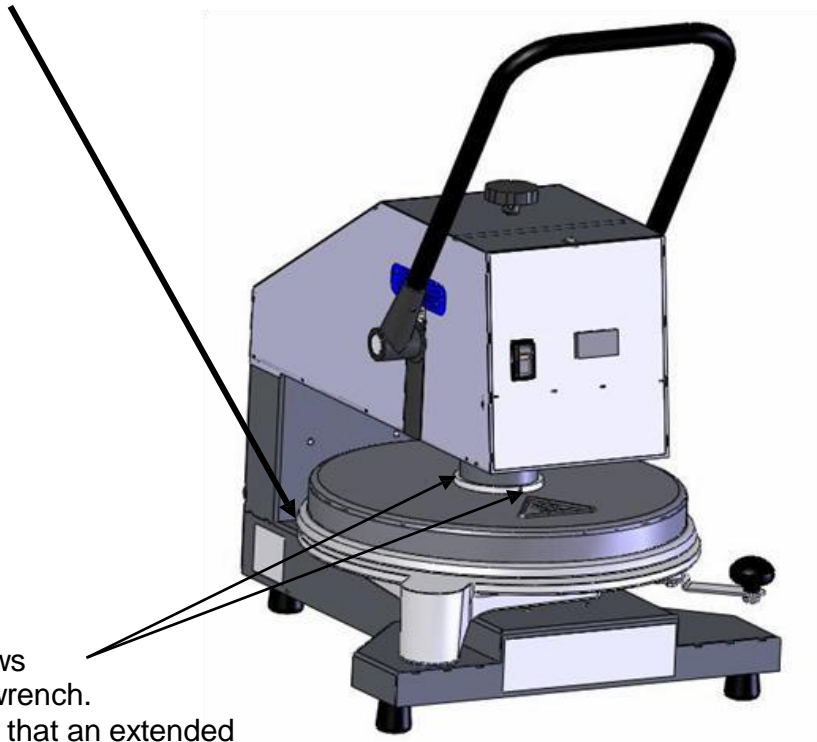


Front Panel Operation



INSPECTING THE LIMIT SWITCH AND HEATER & LEVELING THE PLATEN

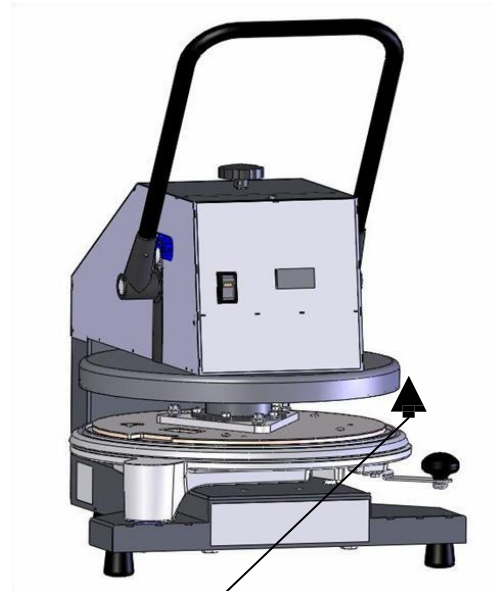
Disconnect Electrical Plug, and allow Dough Press to Cool Down.



Loosen 3 set screws
Using 3/32" allen wrench.
It is recommended that an extended
Ball end allen wrench be used.



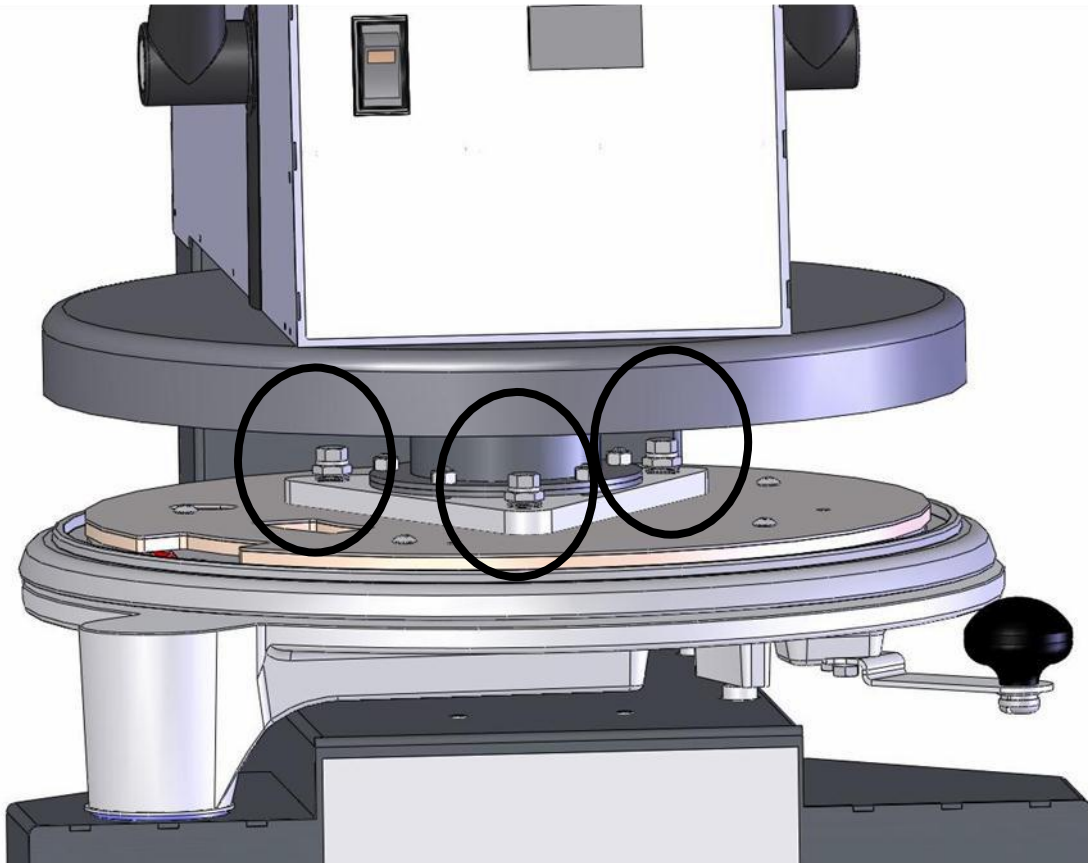
Slide Ring Up



Raise Cover Up



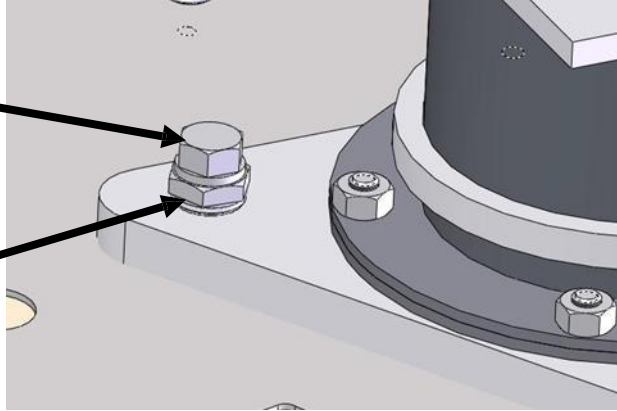
The use of a "Bungee" Cord stretched over the top of the press will help to hold the cover while working on the top platen. (Approx. 22" relaxed length)



3 Large screws (circled) are for leveling,
and platen removal.

Top Locking Bolt
(1/2" Wrench)

Bottom Adjusting Bolt
(5/8" Wrench)



At all 3 points:

Hold the "Bottom Adjusting" Bolt in place. DO NOT ALLOW THIS TO MOVE.
Loosen and remove the 3 "Top Locking" Bolts.

Raise the plate carefully, using the press handle, and Inspect the wiring, connections, and limit switch.

To Re-Assemble, At all 3 points:

Hold the "Bottom Adjusting" Bolt in place. DO NOT ALLOW THIS TO MOVE.
Insert and tighten the 3 "Top Locking" Bolts, torque the bolts evenly, and insure the platens are level when complete.

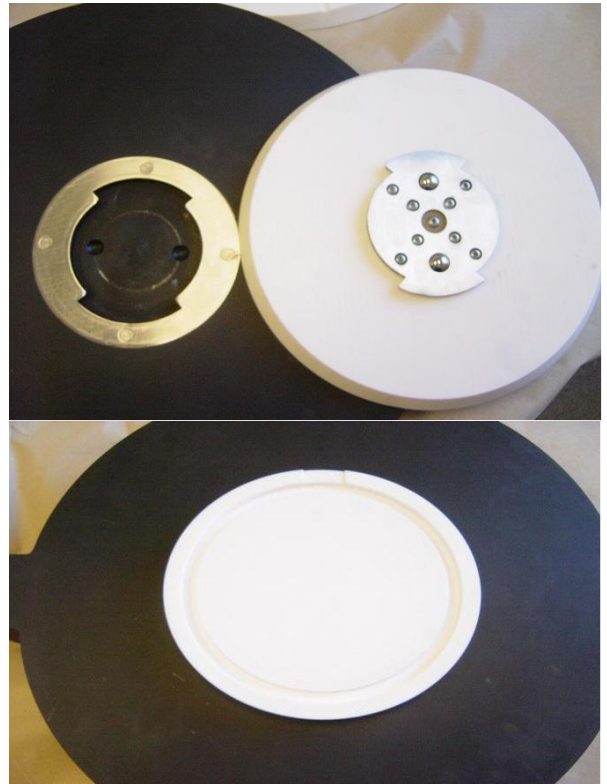
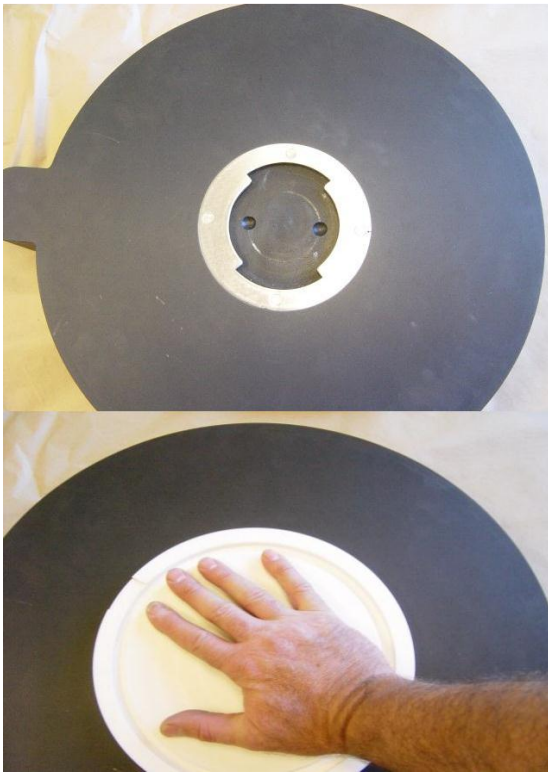


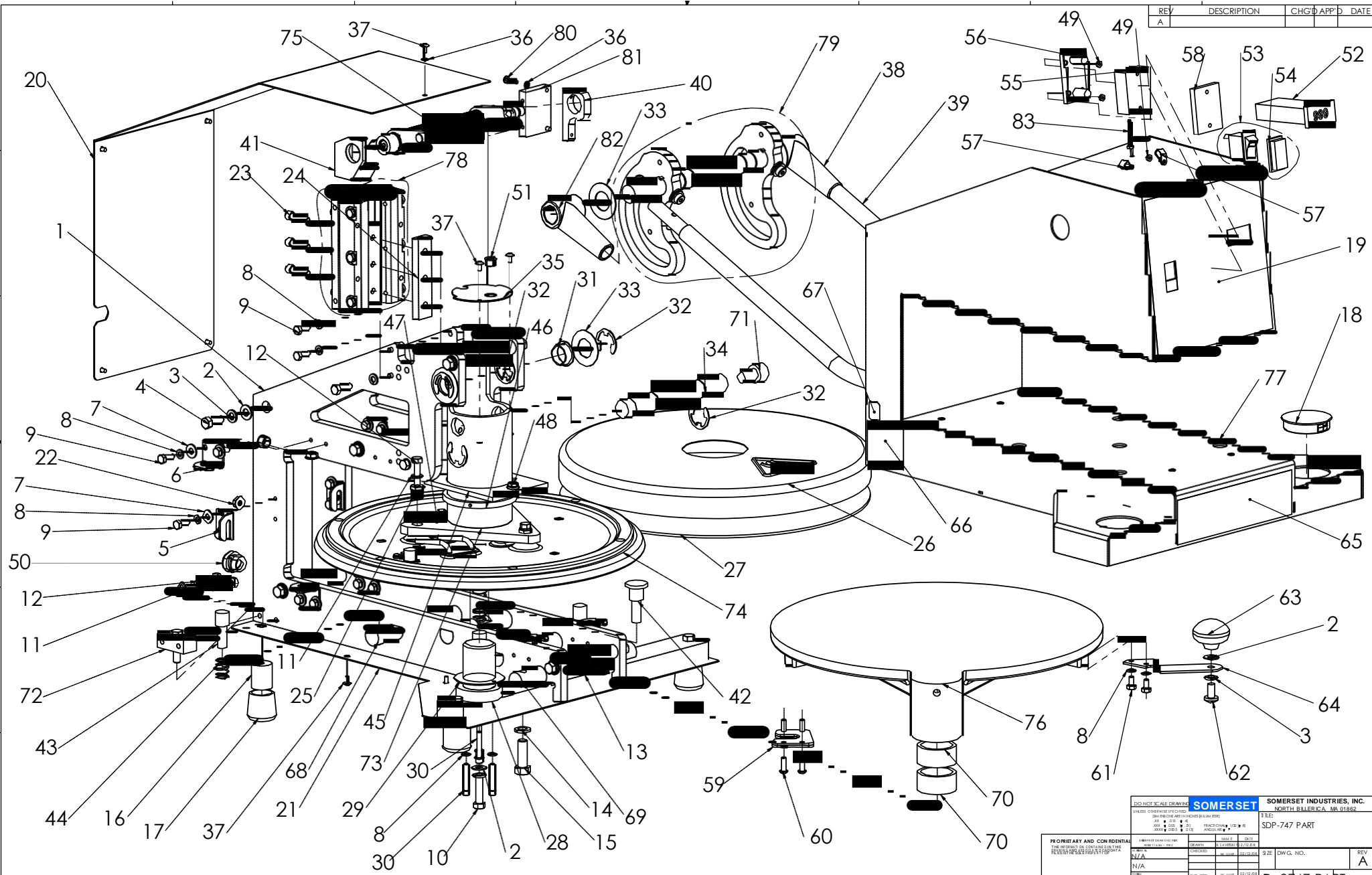
Slide cover and ring
Down and tighten
3 screws securely

CLEANING:

1. TURN OFF MACHINE
2. ALLOW TO COOL DOWN
3. WIPE EXTERIOR OF MACHINE
4. REMOVE, CLEAN & SANITIZE ALL MOULDS
5. CLEAN UPPER & LOWER PLATEN WITH SOFT CLEAN CLOTH
6. WIPE DOWN STAINLESS EXTERIOR DAILY

Removing the moulds from the model **CDR-747D** Bottom Platten:





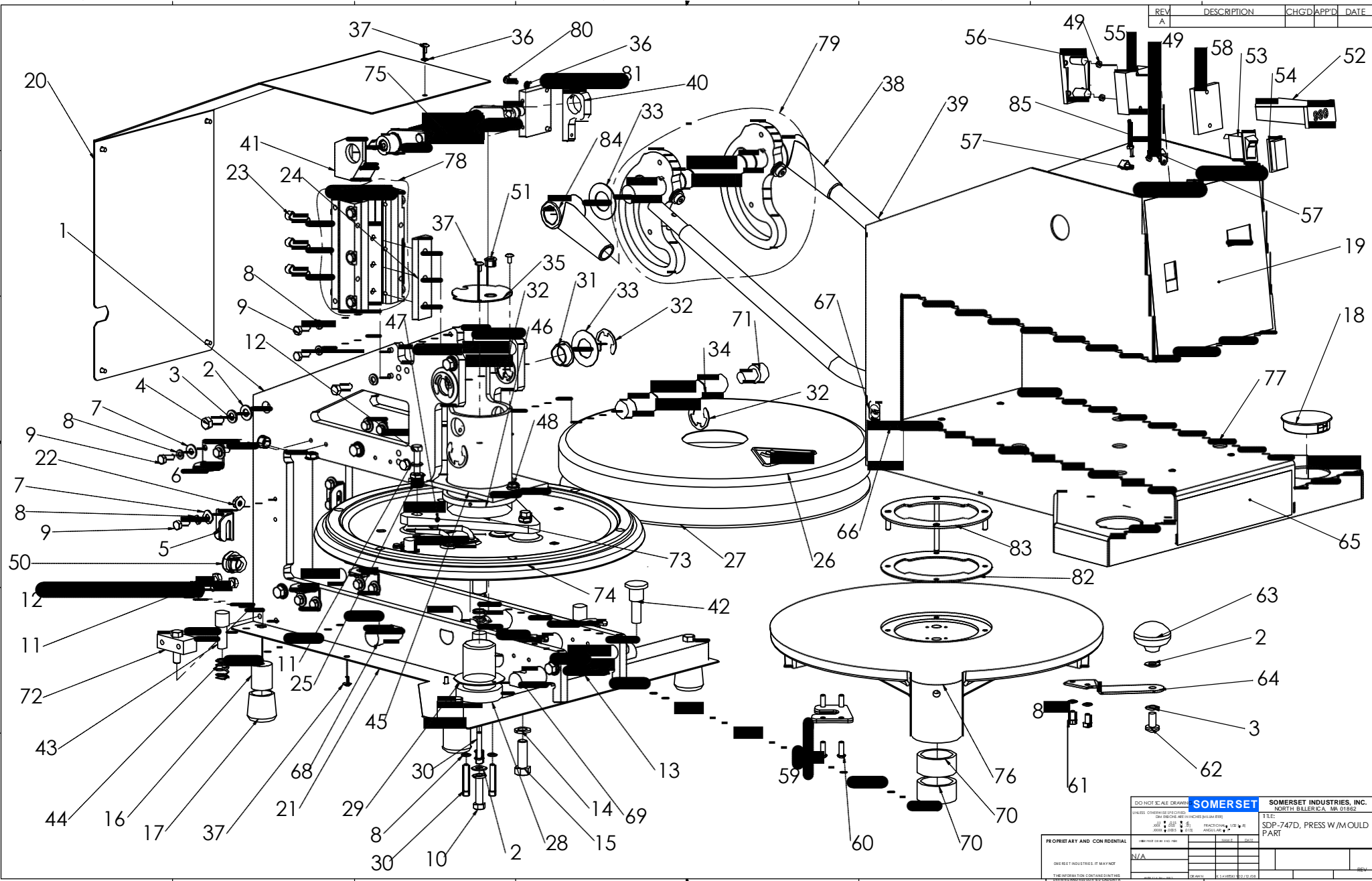
REV	DESCRIPTION	CHG'D	APP'D	DATE
A				

DO NOT SCALE DRAWING <small>UNLESS OTHERWISE SPECIFIED: DIMS IN CHS ARE IN INCHES UNLESS NOTED ANGLES IN DEGREES UNLESS NOTED</small>		SOMERSET <small>UNLESS OTHERWISE SPECIFIED: DIMS IN CHS ARE IN INCHES UNLESS NOTED ANGLES IN DEGREES UNLESS NOTED</small>		SOMERSET INDUSTRIES, INC. NORTH BILLERICA, MA 01862
TITLE: SDP-747 PART				
PROPRIETARY AND CONFIDENTIAL <small>THE INFORMATION CONTAINED HEREIN IS THE PROPERTY OF SOMERSET INDUSTRIES, INC. AND IS TO BE KEPT CONFIDENTIAL AND NOT REPRODUCED OR TRANSMITTED IN ANY FORM OR BY ANY MEANS, ELECTRONIC OR MECHANICAL, INCLUDING PHOTOCOPYING, RECORDING, OR BY ANY INFORMATION STORAGE AND RETRIEVAL SYSTEM.</small>	<small>REVISED DRAWING NO.</small> N/A	<small>DATE</small> 03/12/08	<small>SCALE</small> 12:24 WBGHT N/A	<small>REV</small> A

D-0747-PART

ITEM NO.	PART NUMBER	DESCRIPTION	QTY.
1	0747-121	ASSY, REINFORCEMENT	1
2	3000-201	WASHER, FLAT 3/8	16
3	3000-103	WASHER, LOCK SPLIT 3/8	14
4	3000-409	SCREW, 3/8-16X1 HEXHD SS	10
5	0747-039	BRACKET, FRAME TO SHELL LEFT	6
6	0747-043	BRACKET, FRAME TO SHELL RIGHT	4
7	3000-200	WASHER, FLAT 1/4	20
8	3000-106	WASHER, LOCK SPLIT 1/4	30
9	3000-404	SCREW, 1/4-20 X 3/4 HEXHD	24
10	3000-421	SCREW, 3/8-16 X 1-1/2 HEXHD	5
11	3000-102	WASHER, LOCK SPLIT 5/16	11
12	3000-413	SCREW, 5/16-18 X 1 1/2 HEXHD GR8	7
13	0747-102	BAR, FRONT	1
14	3000-105	WASHER, LOCK SPLIT 1/2	2
15	3000-437	SCREW, 1/2-13 X 1-1/2 HEXHD	2
16	0100-034	FOOT, 1.0 TALL X 1.125 DIA	4
17	4000-300	LEG TIP RUBBER	4
18	4000-122	PLUG, PLASTIC 2.5 DIA 747 FRAME	1
19	5000-611	DECAL, SDP 747 MAIN	1
20	0747-020	PANEL, COVER TOP	1
21	0747-048	PANEL, COVER BOTTOM	1
22	3000-305	NUT, FLANGE 5/16-18	10
23	3000-426	SCREW, 5/16-18 X 1-1/4 SHCS	3
24	0747-167	DOVETAIL, SPACER	1
25	0747-129	BUSHING, PLATEN LEVELING	3
26	0750-199	COVER, 18" PLATEN TOP	1
27	0747-218	INSULATION, COVER CUT TO SIZE	1
28	0747-103	POST, LOWER PLATEN	1
29	4000-312	WASHER, IGUS 1-3/4" ID	1
30	3000-432	SCREW, 1/4-20 X 1-1/2 SHCS	4
31	4000-554	BUSHING, W/SHDR GARLOCK HANDLE	2
32	4000-314	RING, RETAINING EXTERNAL	6
33	3000-205	WASHER, HANDLE PRESS 2 OD 1-1/16ID .047THK	4
34	0747-204	CAM SHAFT	1
35	0747-026	DISK, COVER CYLINDER	1
36	3000-101	WASHER, LOCK INT TOOTH #10	9
37	3000-402	SCREW, 10-32 X 3/8 TRUSS PH SS	11
38	0747-500	ELBOW, HANDLE RIGHT	1
39	0747-128	HANDLE, MAIN 747	1
40	0747-141	BLOCK, MTG C'BAL RIGHT	1
41	0747-144	BLOCK, C'BAL LEFT	1
42	0747-156	STUD, CENTER PLATEN SUPPORT	1
43	0747-124	STUD, BOTTOM PLATEN REST	4
44	4000-257	SPRING, COMPRESSION 747 PLATEN LEVEL	5
45	0747-197	COLLAR, CYLINDER UHMW 747	1
46	0747-109	COLLAR, CYLINDER 747 ALUM	1
47	3000-340	SCREW, 10-32 X 1/4 SET HEX	3
48	3000-303	NUT, FLANGE 1/4-20	1
49	3000-310	NUT, HEX 6-32	6
50	5000-279	BUSHING, CORD LOCK	1
51	5000-280	BUSHING, CORD 747 .565 HOLE	2
52	5000-401	CONTROLLER, TEMP CAL-3200	1
53	5000-200	SWITCH, ROCKER T10/220VAC 3 PRONG SPST	1
54	5000-196	COVER, SWITCH ROCKER	1
55	5000-152	RELAY, CRYDOM D2450G	1
56	5000-153	COVER, RELAY	1
57	5000-267	CLAMP, 5/16ID X 1/2 WIDE X .166DIA NYLON	4
58	0747-117	BRACKET, HEAT SINK	1
59	0747-044	WELDMENT, HORSESHOE	1
60	3000-428	SCREW, 1/4-20 X 3/4 HEX BUTTON HEAD	4
61	3000-410	SCREW, 1/4-20 X 1/2 HEXHD	2
62	3000-420	SCREW, 3/8-16 X 3/4 PAN HD SLOT	1
63	4000-405	KNOB, 2" DIA 3/8-16	1
64	0747-030	BRACKET, KNOB SUPPORT	1
65	5000-323	DECAL "DOUGH PRESS"	1
66	5000-326	DECAL, ETL, MODEL/SERIAL	1
67	5000-317	LABEL, NSF	1
68	0747-104	ROD, LWR PLATEN SPRT	2
69	0747-111	ROD, FRONT FRAME MTG	1
70	4000-558	BEARING, NEEDLE PLATEN SWING 1.75IDX2.125ODX1LG	2
71	4000-557	CAM FOLLOWER, 1 DIA	2
72	0747-602	WELDMENT, BLOCK REAR LEG	2
73	0747-216	CYLINDER WELDMENT	1
74	0747-604	ASSY, PLATEN UPR W/ SWITCH & T/C T20VAC	1
75	0747-146	COUNTERBALANCE #251, 1.044dia	1
76	0747-609	PLATEN, LOWER MACHINED	1
77	0747-010	FRAME, MAIN 747	1
78	0747-160	ASSY, DOVETAIL GEN III	1
79	0747-601	ASSY, HANDLE SHAFT, CAMS	1
80	3000-339	SCREW, 10-24 X 3/4 ROUND PH	2
81	0747-210	BRACKET, CB NO HOLE	1
82	0747-499	ELBOW, HANDLE LEFT	1
83	5000-241	CABLE 17" 1897C ALPHA W/2 FORK	1
126	3000-231	WASHER, LOCK SPLIT 1/4 GR8	12

REV	DESCRIPTION	CHGD	APPR	DATE
UNLESS OTHERWISE SPECIFIED		SOMERSET INDUSTRIES, INC. NORTH BELLERICA, MA 01862		
DIMENSIONS ARE IN INCHES (DIMENSIONS IN MILLIMETERS)		SHEET NO. 1 OF 2		
TOLERANCES UNLESS OTHERWISE SPECIFIED		DRAWING NO. D 0747-PART A		
FRACTIONS: 1/16, 1/8, 1/4, 3/8, 1/2, 5/8, 3/4, 7/8, 1, 1 1/4, 1 1/2, 1 3/4, 2, 2 1/4, 2 1/2, 3, 3 1/4, 3 1/2, 4, 4 1/4, 4 1/2, 5, 5 1/4, 5 1/2, 6, 6 1/4, 6 1/2, 7, 7 1/4, 7 1/2, 8, 8 1/4, 8 1/2, 9, 9 1/4, 9 1/2, 10		SCALE: 1" = 1" (WEIGHT N/A) SHEET 004		
PROPRIETARY AND CONFIDENTIAL THE INFORMATION CONTAINED HEREIN IS UNCLASSIFIED EXCEPT WHERE SHOWN OTHERWISE. IT IS THE PROPERTY OF SOMERSET INDUSTRIES, INC. AND IS NOT TO BE DISCLOSED TO ANY OTHER PARTY WITHOUT THE WRITTEN CONSENT OF SOMERSET INDUSTRIES, INC.				



REV	DESCRIPTION	CHGD	APPD	DATE
A				

DO NOT SCALE DRAWING
 UNLESS OTHERWISE SPECIFIED
 DIMENSIONS ARE IN INCHES (DIMENSIONS IN MILLIMETERS)
 ANGLES ARE IN DEGREES
 UNLESS OTHERWISE SPECIFIED

SOMERSET SOMERSET INDUSTRIES, INC.
 NORTH BILLERICA, MA 01862

TITLE: SDP-747D, PRESS W/MOULD PART

PROPRIETARY AND CONFIDENTIAL	DATE	BY	CHKD	APPD	REV

REPRODUCED IN PART OR AS A WHOLE FOR OTHER THAN THE ORIGINAL INTENDED PURPOSE IS PROHIBITED.
 DATA: SEI/SOLIDWORKS D.A.

D0747D-PART A
 SCALE: 1:2.25
 SHEET 1 OF 2

ITEM NO.	PART NUMBER	DESCRIPTION	QTY.
1	0747-121	ASSY. REINFORCEMENT	1
2	3000-201	WASHER, FLAT 3/8	16
3	3000-103	WASHER, LOCK SPLIT 3/8	14
4	3000-409	SCREW, 3/8-16X1 HEXHD SS	10
5	0747-039	BRACKET, FRAME TO SHELL LEFT	6
6	0747-043	BRACKET, FRAME TO SHELL RIGHT	4
7	3000-200	WASHER, FLAT 1/4	20
8	3000-106	WASHER, LOCK SPLIT 1/4	30
9	3000-404	SCREW, 1/4-20 X 3/4 HEXHD	24
10	3000-421	SCREW, 3/8-16 X 1-1/2 HEXHD	5
11	3000-102	WASHER, LOCK SPLIT 5/16	11
12	3000-413	SCREW, 5/16-18 X 1 1/2 HEXHD GR8	7
13	0747-102	BAR, FRONT	1
14	3000-105	WASHER, LOCK SPLIT 1/2	2
15	3000-437	SCREW, 1/2-13 X 1-1/2 HEXHD	2
16	0100-034	FOOT, 1.0 TALL X 1.125 DIA	4
17	4000-300	LEG TIP RUBBER	4
18	4000-122	PLUG, PLASTIC 2.5 DIA 747 FRAME	1
19	5000-611	DECAL, SDP 747 MAIN	1
20	0747-020	PANEL, COVER TOP	1
21	0747-048	PANEL, COVER BOTTOM	1
22	3000-305	NUT, FLANGE 5/16-18	10
23	3000-426	SCREW, 5/16-18 X 1-1/4 SHCS	3
24	0747-167	DOVETAIL, SPACER	1
25	0747-129	BUSHING, PLATEN LEVELING	3
26	0750-199	COVER, 18" PLATEN TOP	1
27	0747-218	INSULATION, COVER CUT TO SIZE	1
28	0747-103	POST, LOWER PLATEN	1
29	4000-312	WASHER, IGUS 1-3/4" ID	1
30	3000-432	SCREW, 1/4-20 X 1-1/2 SHCS	4
31	4000-554	BUSHING, W/SHDR GARLOCK HANDLE	2
32	4000-314	RING, RETAINING EXTERNAL	6
33	3000-205	WASHER, HANDLE PRESS 2 OD 1-1/16ID .047THK	4
34	0747-204	CAM SHAFT	1
35	0747-026	DISK, COVER CYLINDER	1
36	3000-101	WASHER, LOCK INT TOOTH #10	9
37	3000-402	SCREW, 10-32 X 3/8 TRUSS PH SS	11
38	0747-500	ELBOW, HANDLE RIGHT	1
39	0747-128	HANDLE, MAIN 747	1
40	0747-141	BLOCK, MTG C'BAL RIGHT	1
41	0747-144	BLOCK, C'BAL LEFT	1
42	0747-156	STUD, CENTER PLATEN SUPPORT	1
43	0747-124	STUD, BOTTOM PLATEN REST	4
44	4000-257	SPRING, COMPRESSION 747 PLATEN LEVEL	5
45	0747-197	COLLAR, CYLINDER UHMW 747	1
46	0747-109	COLLAR, CYLINDER 747 ALUM	1
47	3000-340	SCREW, 10-32 X 1/4 SET HEX	3
48	3000-303	NUT, FLANGE 1/4-20	5
49	3000-310	NUT, HEX 6-32	6
50	5000-279	BUSHING, CORD LOCK	1
51	5000-280	BUSHING, CORD 747 .565 HOLE	2
52	5000-401	CONTROLLER, TEMP CAL-3200	1
53	5000-200	SWITCH, ROCKER T10/220VAC 3 PRONG SPST	1
54	5000-196	COVER SWITCH ROCKER	1
55	5000-152	RELAY CRYDOM D2450G	1
56	5000-153	COVER, RELAY	1
57	5000-267	CLAMP, 5/16ID X 1/2 WIDE X .166DIA NYLON	4
58	0747-117	BRACKET, HEAT SINK	1
59	0747-044	WELDMNT, HORSESHOE	1
60	3000-428	SCREW, 1/4-20 X 3/4 HEX BUTTON HEAD	4
61	3000-410	SCREW, 1/4-20 X 1/2 HEXHD	2
62	3000-420	SCREW, 3/8-16 X 3/4 PAN HD SLOT	1
63	4000-405	KNOB, 2" DIA 3/8-16	1
64	0747-030	BRACKET, KNOB SUPPORT	1
65	5000-323	DECAL "DOUGH PRESS"	1
66	5000-326	DECAL, ETL, MODEL/SERIAL	1
67	5000-317	LABEL, NSF	1
68	0747-104	ROD, LWR PLATEN SPRT	2
69	0747-111	ROD, FRONT FRAME MTG	1
70	4000-558	BEARING, NEEDLE PLATEN SWING 1.75IDX2.125ODX1LG	2
71	4000-557	CAM FOLLOWER, 1 DIA	2
72	0747-602	BLOCK, REAR LEG MTG	2
73	0747-217	CYLINDER WELDMNT MOULD	1
74	0747-604	ASSY. PLATEN UPR W/ SWITCH & 1/C 120VAC	1
75	0747-146	COUNTERBALANCE #251, 1.044dia	1
76	0747-609	PLATEN, LOWER MACHINED	1
77	0747-010	FRAME, MAIN 747	1
78	0747-160	ASSY, DOVETAIL GEN III	1
79	0747-601	ASSY, HANDLE SHAFT, CAMS	1
80	3000-339	SCREW, 10-24 X 3/4 ROUND PH	2
81	0747-210	BRACKET, CB NO HOLE	1
82	0747-042	BRACKET PLATEN, MOULD 2OF2	1
83	0747-035	BRACKET PLATEN, MOULD TOF2	1
84	0747-499	ELBOW, HANDLE LEFT	1
85	5000-241	CABLE 17" T897C ALPHA W/2 FORK	1
130	3000-231	WASHER, LOCK SPLIT 1/4 GR8	12

REV	DESCRIPTION	CHGD	APPR	DATE
UNLESS OTHERWISE SPECIFIED:		SOMERSET INDUSTRIES, INC.		
		NORTH BILLERICA, MA 01862		
		SDP-747D, PRESS W/MOULD PART		
		D0747D-PART A		
		SCALE: 1" = 1" WEIGHT: N/A SHEETS: 0/4		

PROPRIETARY AND CONFIDENTIAL
 THE INFORMATION CONTAINED IN THIS DRAWING IS THE PROPERTY OF SOMERSET INDUSTRIES, INC. IT IS TO BE USED FOR THE PROJECT AND DATE SPECIFIED HEREON. IT IS NOT TO BE REPRODUCED, COPIED, OR TRANSMITTED IN ANY FORM OR BY ANY MEANS, WITHOUT THE EXPRESS WRITTEN CONSENT OF SOMERSET INDUSTRIES, INC.